

Orona 3G

X-35C

Hydraulic drive solutions for heavy and/or delicate loads

Hydraulic solution for medium loads.
Flexible and robust.

General specifications

Load / Capacity	1,275 to 2,500 kg
Speed	0,3 - 0,6 m/s
Maximum travel	21 m
Maximum floors served	14 floors
Entrances	1 front / 2 open through
Drive system	Hydraulic
Controller	ARCA III controller, low energy consumption multiprocessor
Door types	Automatic side-opening / Automatic central-opening
Clear door opening	From 900 to 2,200 mm (in increments of 100 mm)
Door height	2,000 / 2,100 / 2,200 / 2,300
Car dimensions	Parametric car dimensions
Internal car height	2,200 / 2,300 / 2,400 / 2,500
Aesthetic solutions	Heavy loads Aesthetics

Standard **Optional**



1 HYDRAULIC LIFTS

The hydraulic systems, renowned for their long life cycle, are very versatile and offer convenient solutions to heavy load requirements or reduced shaft spaces.



2 PARAMETRIC/FLEXIBLE

Flexible car and door configurations ensure available shaft dimensions can be optimised.



3 ROBUST LIFT CAR

Provides greater comfort during lift travel, with reduced vibration and noise.



4 CARS

Special car dimensions, with extra depth and wider doors. Designed with reinforced panels and floors for multiple and intensive uses.



Standard dimensions*

Load / Capacity		Car					Lift shaft ⁰				
Speed	Q Load	AC Width		FC Depth		PL Clear opening	Entrances	AH ¹ Width	FH ² Depth	HF Pit	HUP ³ Headroom
		min.	max.	min.	max.						
0.3-0.6 m/s	1,275 kg	1,100	1,900	1,500	2,600	900 - 2,200	1	1,900	2,900	1,100	3,550
							2x180°		3,000		
	1,600 kg	1,500	3,300								
		2x180°	3,400								
		1	3,300								
1,800 kg	1,200	2,300	1,500	3,000	1	2,000	3,400				
					2x180°		3,400				
2,000 kg					1,500		3,300				
					2x180°		3,400				
2,500 kg	1,400	2,350	1,750	3,000	1	2,200	3,300				
							2x180°	3,400			

0 Minimum plumb measurements

1 Minimum AH for the assigned AC

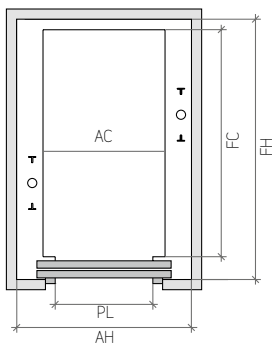
2 FH for minimum AH and landing doors with tracks projecting 40 mm on the landing

3 HUP for interior car height (HC) of 2,200 mm and guardrail of 700 mm
HUP will be reduced by 70 mm for LED lighting

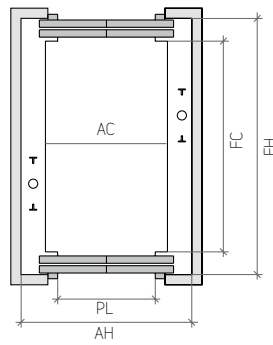
* The information is not contractually binding and is subject to the conditions of the shaft

Layout

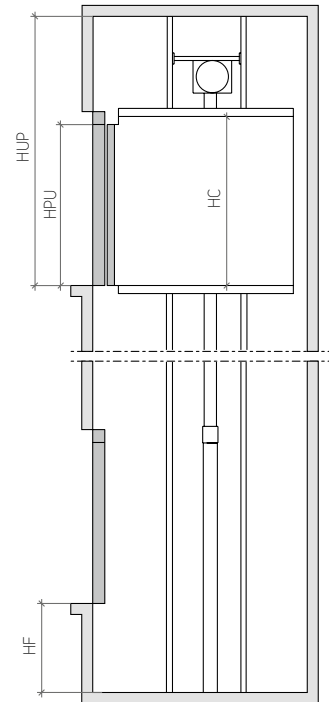
1 ENTRANCE



2 ENTRANCES (OPEN THROUGH)



VERTICAL SECTION



Customised car dimensions

Car width		Clear door opening	
Car depth	Car width	900	2,200
1,050	1,500		
1,050	1,600		
1,050	1,700		
1,050	1,800		
1,050	1,900		
1,050	2,000		
1,050	2,100		
1,050	2,200		
1,200	1,500		
1,200	1,600		
1,200	1,700		
1,200	1,800		
1,200	1,900		
1,200	2,000		
1,200	2,100		
1,200	2,200		
1,300	1,500		
1,300	1,600		
1,300	1,700		
1,300	1,800		
1,300	1,900		
1,300	2,000		
1,300	2,100		
1,300	2,200		
1,400	1,500		
1,400	1,600		
1,400	1,700		
1,400	1,800		
1,400	1,900		
1,400	2,000		
1,400	2,100		
1,400	2,200		
1,500	1,500		
1,500	1,600		
1,500	1,700		
1,500	1,800		
1,500	1,900		
1,500	2,000		
1,500	2,100		
1,500	2,200		
1,600	1,500		
1,600	1,600		
1,600	1,700		
1,600	1,800		
1,600	1,900		
1,600	2,000		
1,600	2,100		
1,600	2,200		
1,700	1,500		
1,700	1,600		
1,700	1,700		
1,700	1,800		
1,700	1,900		
1,700	2,000		
1,700	2,100		
1,700	2,200		
1,800	1,500		
1,800	1,600		
1,800	1,700		
1,800	1,800		
1,800	1,900		
1,800	2,000		
1,800	2,100		
1,800	2,200		
1,900	1,500		
1,900	1,600		
1,900	1,700		
1,900	1,800		
1,900	1,900		
1,900	2,000		
1,900	2,100		
1,900	2,200		
2,000	1,500		
2,000	1,600		
2,000	1,700		
2,000	1,800		
2,000	1,900		
2,000	2,000		
2,000	2,100		
2,000	2,200		
2,100	1,500		
2,100	1,600		
2,100	1,700		
2,100	1,800		
2,100	1,900		
2,100	2,000		
2,100	2,100		
2,100	2,200		
2,200	1,500		
2,200	1,600		
2,200	1,700		
2,200	1,800		
2,200	1,900		
2,200	2,000		
2,200	2,100		
2,200	2,200		

1 = 1,050 kg / 2 = 1,200 kg / 3 = 1,400 kg / 4 = 1,600 kg / 5 = 2,000 kg / 6 = 2,500 kg

Note: Car width and depth variable, in increments of 50 mm.

For simplification, table samples show increments of 100 mm.